



Residential Complex with Luxury apartments  
of two, three & four bedroom apartments.




The image shows the exterior of a modern residential building named 'The Hive'. The entrance features large glass doors and windows that offer a view into a bright, minimalist interior with light-colored walls and wooden slat accents. To the right of the entrance, a grey concrete wall displays the 'HIVE' logo in large, dark, 3D letters, accompanied by a yellow and black hexagonal icon. Below the logo is a dark grey mailbox panel with 15 numbered compartments. The foreground is a paved walkway with some greenery, including purple flowers and tall grasses. The overall aesthetic is clean and contemporary.

Welcome to The Hive,

A new and exclusive residential development located in the heart of Nicosia. The Hive is located off Kyriakou Matsi and Demostheni Severi avenues, within 500m from the Linear Park, the Presidential Palace, and the grounds of the English School.

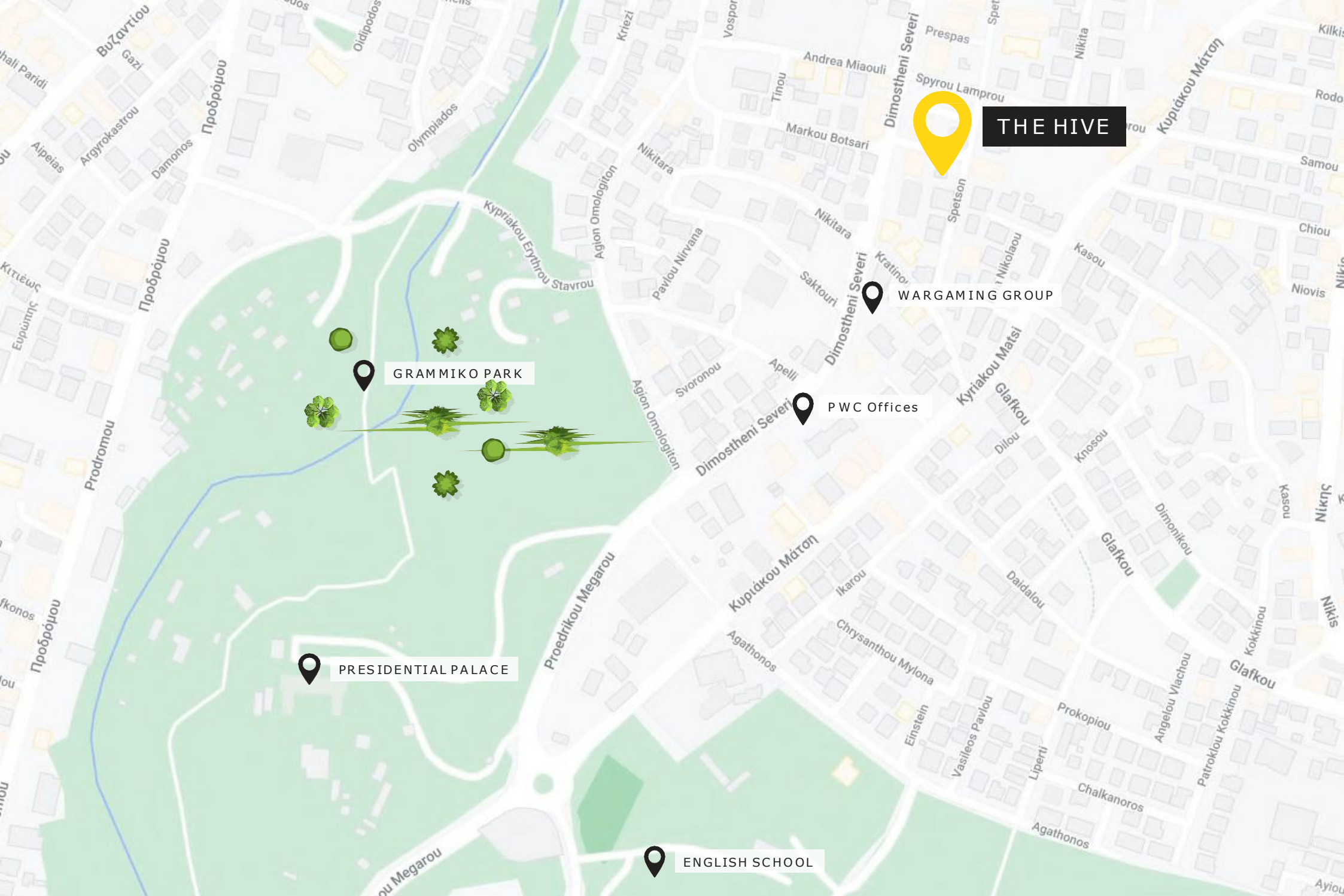




KYRIAKOU MATSI AND  
DEMOSTHENI SEVERI  
AVENUES

[Find on map](#)





GRAMMIKO PARK

PRESIDENTIAL PALACE

ENGLISH SCHOOL

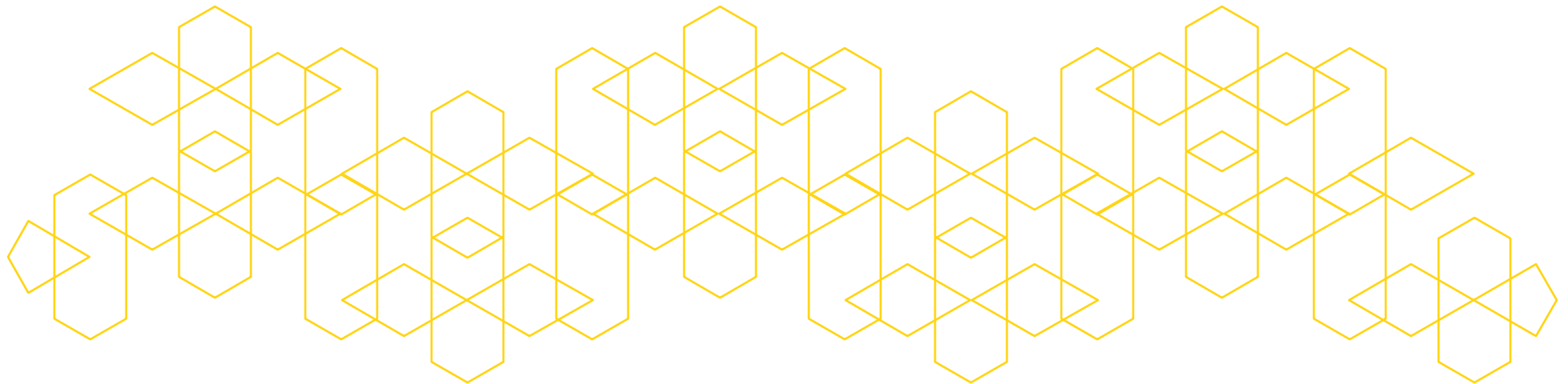
PWC Offices

WARGAMING GROUP

THE HIVE

# Area & Amenities

The Hive is situated within walking distance of Nicosia's main park, the English School, the presidential palace, and the headquarters of major companies such as PWC and Wargaming. It's also surrounded by a variety of restaurants, bars, and other amenities to make your daily life as convenient as possible.



Location

Concept

Amenities

Team

Specs and Floor Plan

Apartment profile



These images are for illustrative purposes.

Make The Hive your new home  
with complete confidence.





These images are for illustrative purposes.

The building comprises of 14 two, three, and four bedroom apartments, with basement car parking, and shared amenities such as children's playground, bbq area, bicycle shed, and sizeable lobby.

Our team of experienced professionals is committed to delivering the finest in design, quality, and customer experience.



# The Hive is more than just a building, it's a community.

Inspired by the social structure of bees, we aim to create a space where residents can live, work, and interact in harmony.

Our apartments are superbly appointed with spacious floor plans, high ceilings, and every design detail speaks of quality and care.

[Location](#)

[Concept](#)

[Amenities](#)

[Team](#)

[Specs and Floor Plan](#)

[Apartment profile](#)





These images are for illustrative purposes.

The Hive is not only about living,  
it's about living better.



# Our building includes:

Exclusively for residents' use.



These images are for illustrative purposes.

14 apartments

2 Basement parking floors

Children's playground

Bicycle shed

Underground Storage Rooms

BBQ area



# Team

The Hive's team of experts has a passion for excellence in design and construction.

We are dedicated to providing residents with the highest quality of service and attention to detail.

The project was designed by an award-winning architect practice AI - Architects led by Alexandros Livadas who specializes in the fields of architecture, interior design and urban design.



Location

Concept

Amenities

**Team**

Specs and Floor Plan

Apartment profile



Our goal is to  
make your life  
at The Hive as  
comfortable  
and enjoyable  
as possible.





# The Hive has it all.

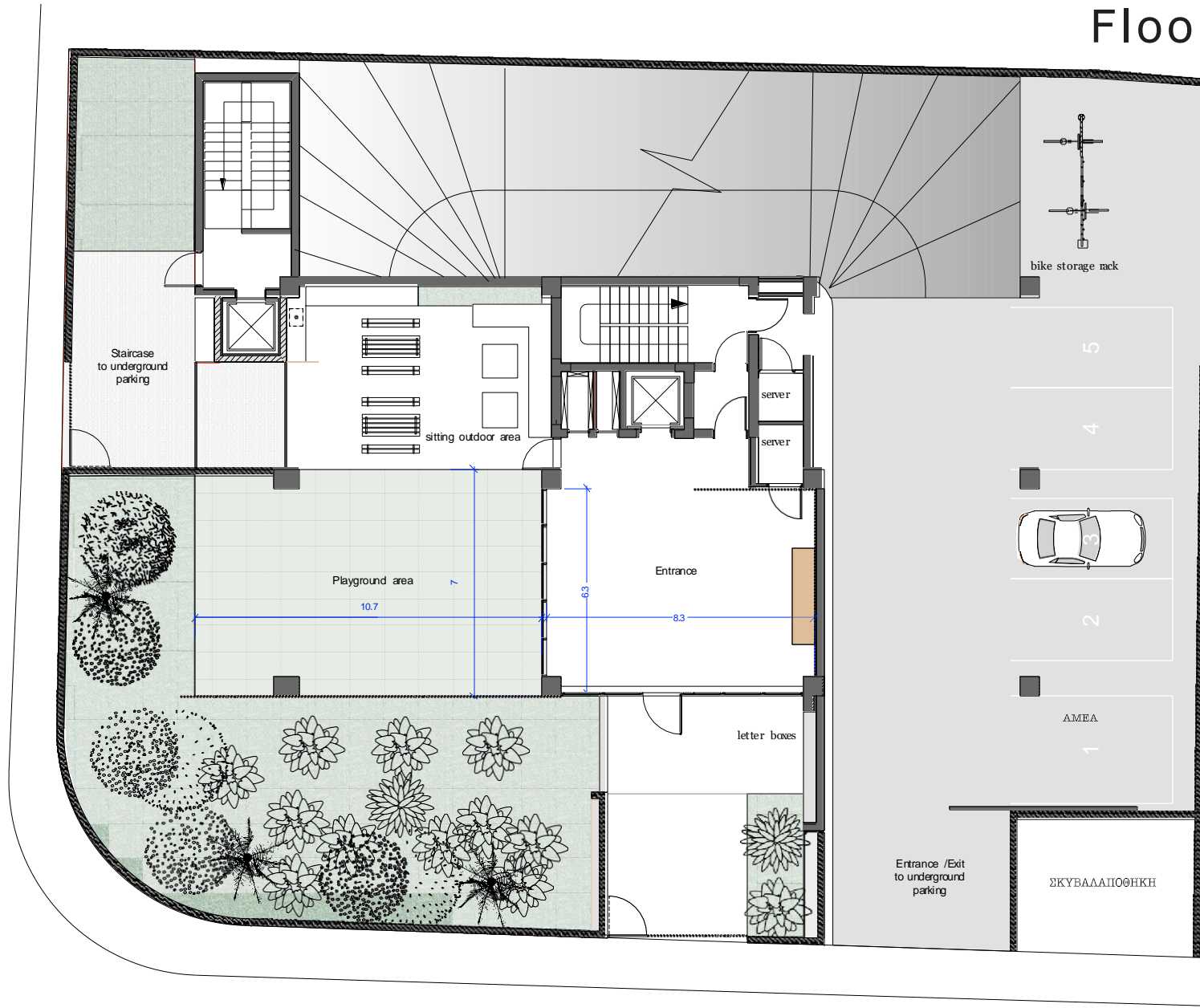
The Hive is built to the highest standards of quality and design.

Our building features state-of-the-art amenities, energy-efficient systems, and top-of-the-line finishes.

Whether you're looking for a comfortable place to call home or a convenient location for doing business in Nicosia.



# Floor plans



Location

Concept

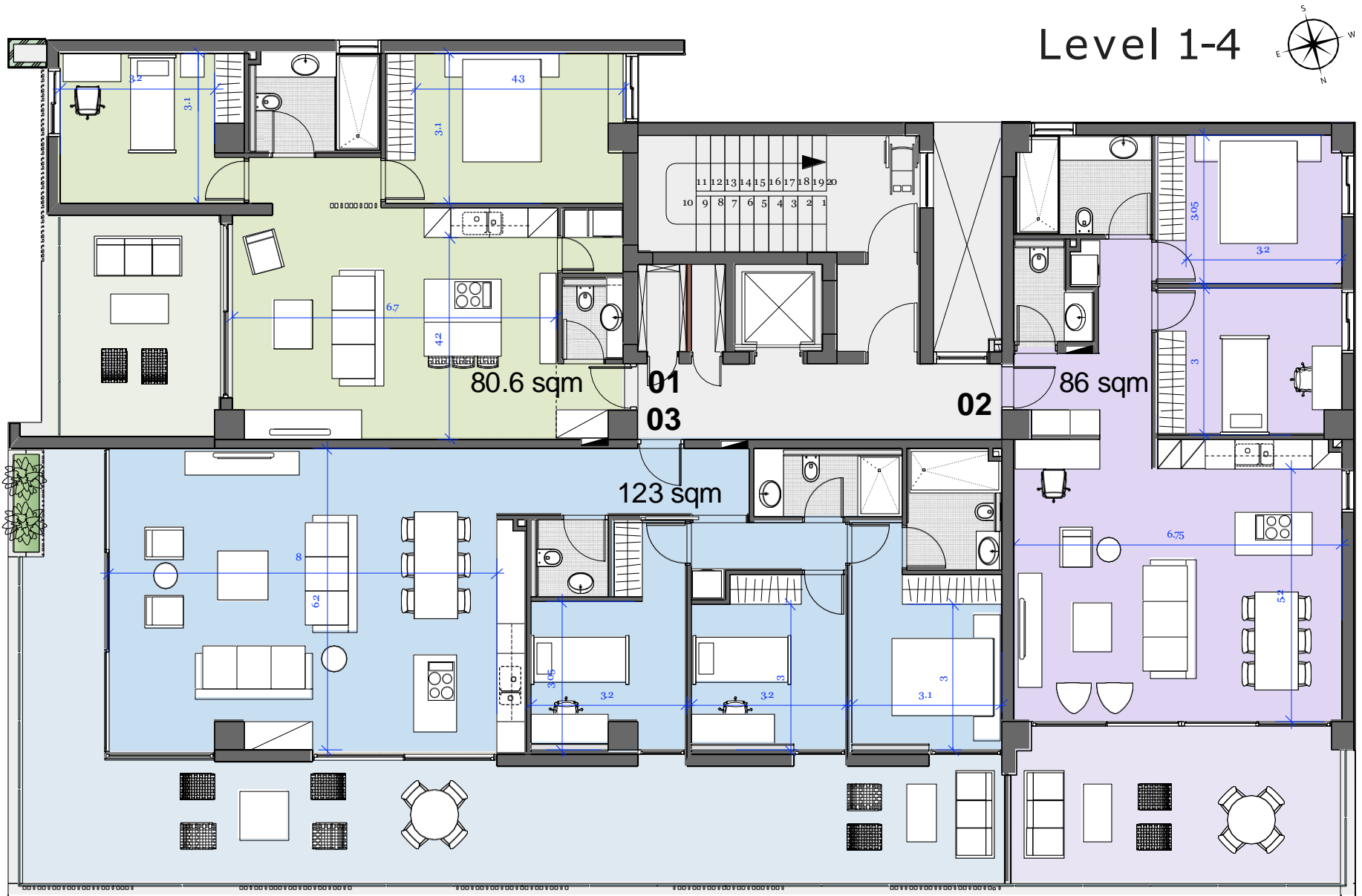
Amenities

Team

Specs and Floor Plan

Apartment profile





Location

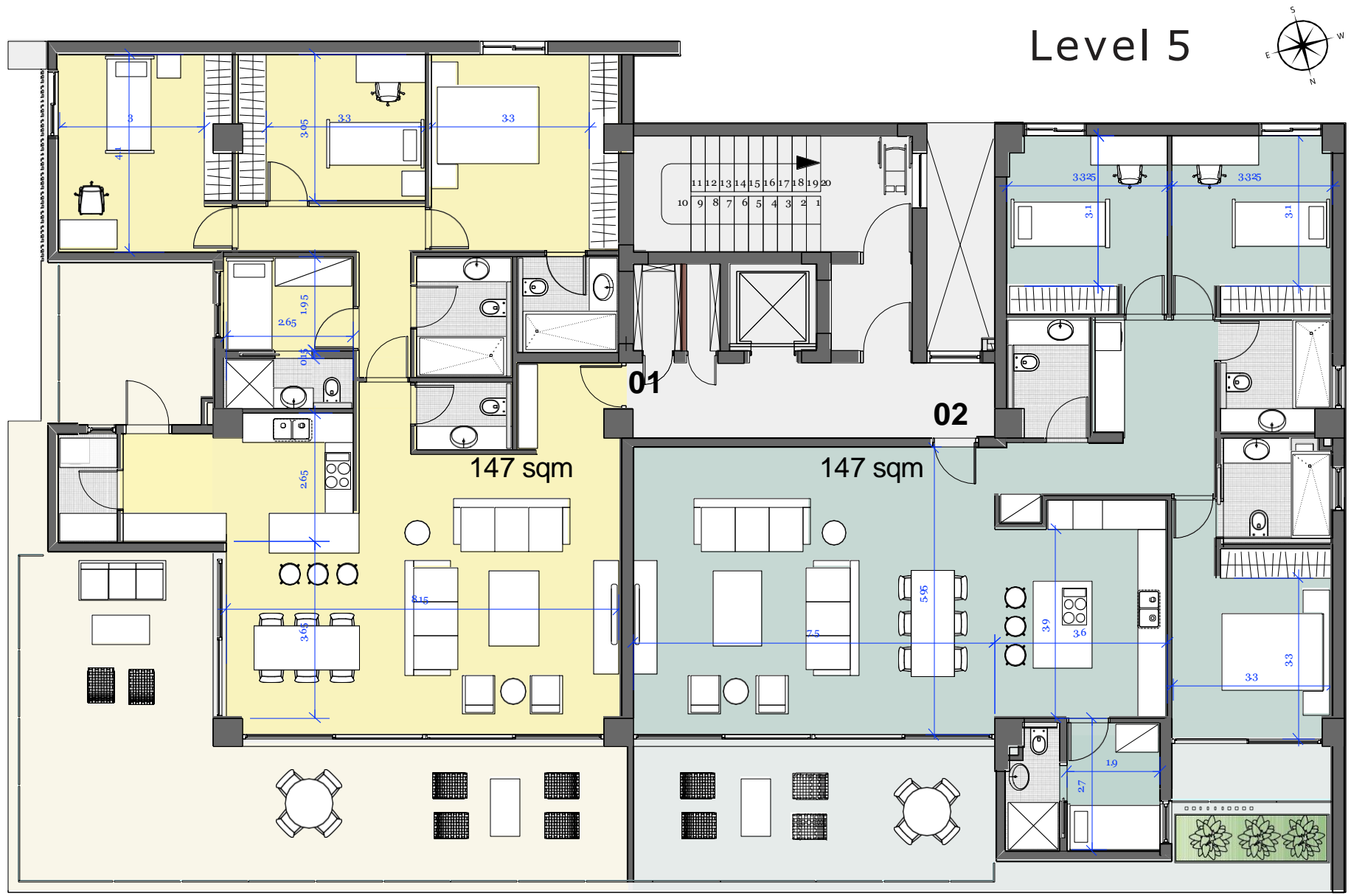
Concept

Amenities

Team

Specs and Floor Plan

Apartment profile



Location

Concept

Amenities

Team

Specs and Floor Plan

Apartment profile





These images are for illustrative purposes.

# Apartment profile

The Hive offers 14 exclusive apartments with a variety of floor plans to choose from. Prices are competitive and designed to provide residents with the best value for their investment.

Apt	Floor	Bedrooms	Bathrooms	Covered Internal sqm	Covered Terraces sqm	Total Covered Area sqm	Basement Parking spaces*	Storage Room
101	1	2	1	80.6	14.2	94.8	1	Yes
102	1	2	1	86	20.4	106.4	1	Yes
103	1	3	2	123	59	182	2	Yes
201	2	2	1	80.6	14.2	94.8	1	Yes
202	2	2	1	86	20.4	106.4	1	Yes
203	2	3	2	123	59	182	2	Yes
301	3	2	1	80.6	14.2	94.8	1	Yes
302	3	2	1	86	20.4	106.4	1	Yes
303	3	3	2	123	59	182	2	Yes
401	4	2	1	80.6	14.2	94.8	1	Yes
402	4	2	1	86	20.4	106.4	1	Yes
403	4	3	2	123	59	182	2	Yes
501	5	4	3	147	61.4	208.4	2	Yes
502	5	4	3	147	26	173	2	Yes

\*Further additional basement car parking is available for sale.  
Contact us to find out more about our prices and availability.





# Contact us

For more information or to schedule a tour of The Hive, please don't hesitate to contact us. We would be happy to answer any questions you may have.

**Email or call us today to learn more.**

**[info@thehivenicosia.com](mailto:info@thehivenicosia.com)**

**+357 97700072**